



Gene Pardee



Eric Erler Honored with Environmental Excellence Award at Annual Conservation Breakfast

Capitol Land Trust's ninth annual Conservation Breakfast, held February 12, 2013, broke both attendance and fundraising records. Some 500 people gathered to celebrate conservation in southwest Washington, raising more than \$64,700 for Capitol Land Trust's work.

Special guest, Governor Jay Inslee, surprised Executive Director Eric Erler by presenting him with the WA Department of Ecology Environmental Excellence Award, the agency's highest award.

Governor Inslee commented that, "Without Eric's dedication, local communities would not have achieved nearly 5,000 acres of lands conserved in Mason, Thurston and Grays Harbor Counties for the benefit of fish and wildlife. Eric embodies Capitol Land Trust's mission of maintaining the coexistence of people, wildlife and the natural habitats that sustain us all."

At the event, two superstars of the conservation world were presented with Capitol Land Trust's

continued on page 4

The Lower Deschutes: A New Beginning

By Lisa Johnson

Just south of Olympia, there is a special stretch of the Deschutes River that still boasts an intact natural shoreline and forested uplands, providing refuge for a diversity of wildlife. Together with landowners Rich and Sharon Stewart, Capitol Land Trust permanently conserved the 44-acre Stewart property in 1994.

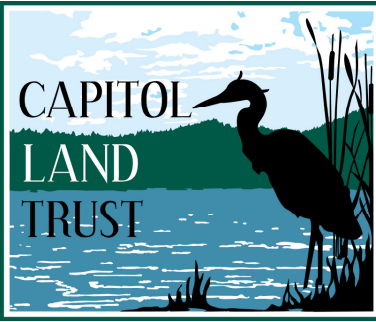
When a neighboring 59-acre undeveloped property recently came up for sale, Rich Stewart contacted Capitol Land Trust about the possibility of acquiring it. Thanks to the generosity of the Stewart family and a grant from the Salmon Recovery Funding Board, Capitol Land Trust was able to purchase and permanently conserve this important riverfront property!

The newly acquired Stewart-Deschutes Preserve is just north of the original Stewart Conservation Easement, and conserves another 1,800 feet of mainstem Deschutes River along its western edge. Unlike much of the Deschutes watershed, which spans 166 square miles, both the Stewart Easement and the new Preserve remain forested with relatively undisturbed shoreline. The properties' extensive riparian buffer and stable banks provide shade and limit sedimentation entering the river. All of the overhanging vegetation on the river bank keeps the water cool, drops leaf litter that supports the aquatic food

continued on page 2

Inside this issue:

Receiving a 110% Tax Benefit for Your Donation	3
Chum Salmon Find Haven at Allison Springs	5
Capitol Land Trust Applies for Accreditation	6
2012 Annual Report to Members	7
Board Transitions	15
Legacy Members Tour Twin Rivers Ranch	16
Carnivorous Plant Thrives in Protected Bog	17
Thank You Donors	18
Upcoming Events	19



209 Fourth Avenue E. #205
Olympia, WA 98501
(360) 943-3012
info@capitollandtrust.org
www.capitollandtrust.org



Associate Director
Kathleen Ackley

Executive Director
Eric Erler

Program Excellence Coordinator
Caitlin Guthrie

Stewardship & Restoration
Projects Coordinator
Guy Maguire

Conservation Program Manager
Laurence Reeves

Finance & Operations Manager
Quita Terrell



Board of Directors
Bonnie Bunning - President
Diane Cooper - Vice President
Steve Hyer, Jr. - Treasurer
Tom Terry - Secretary
Stephanie Bishop
Bob Buhl
Bill Carlson
Emmett Dobey
John Konovsky
Gerry Ring Erickson
Fred Romero
Michael Welter
Chris Wickham



Legal Counsel
Mark Peternell
Bean, Gentry, Wheeler
& Peternell, PLLC

Newsletter Editor
Lisa Johnson

*Great Blue Heron Photograph on Front Cover
by Kim Merriman*

Deschutes continued from page 1

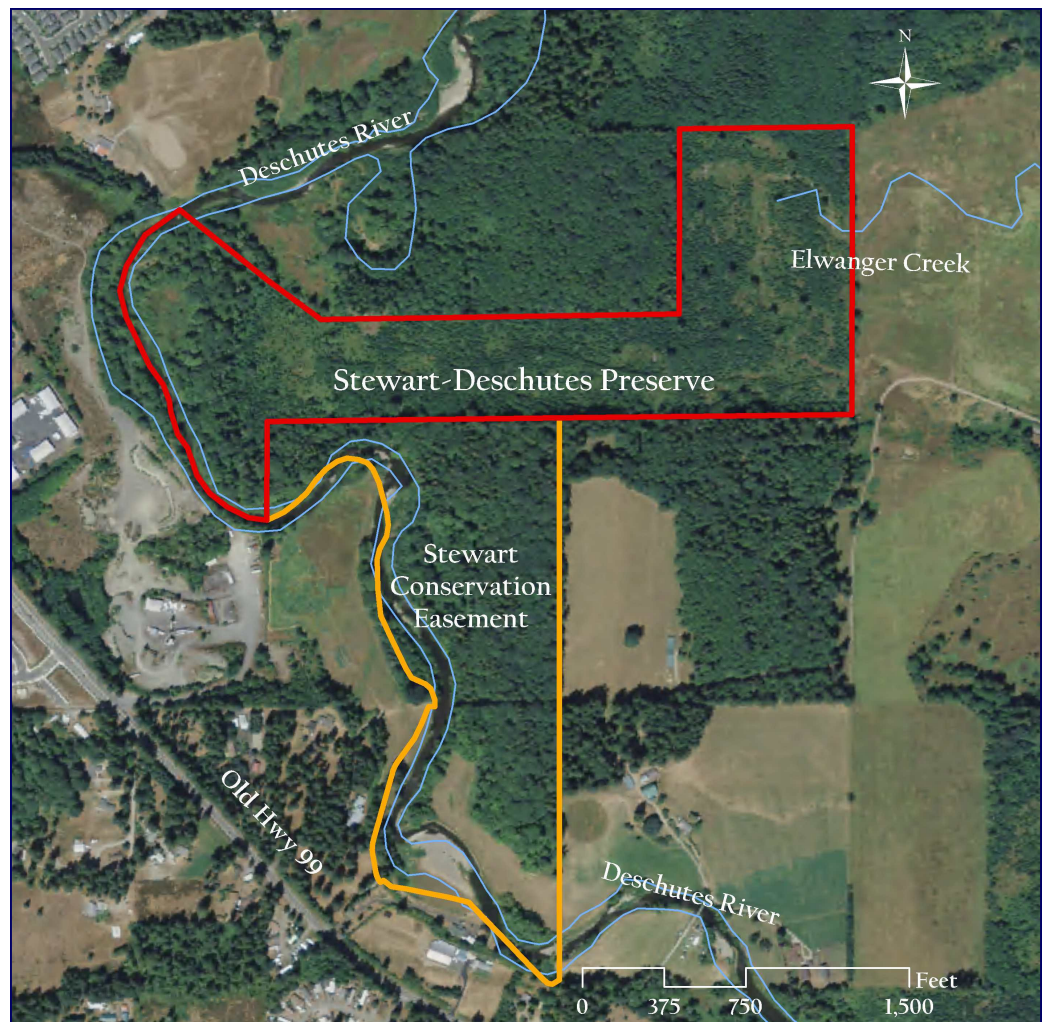
chain, and provides large woody debris that not only slows the flow of the river down, but also creates habitat niches. All these things are critical to a healthy watershed with high water quality.

The new Stewart-Deschutes Preserve is not only an important conservation property but is also steeped in local history. Rich Stewart bought “the 44,” as he calls the Stewart Easement, back in 1985. It is next door to the Ockfen farm where Rich spent many carefree days as a child with his Aunt Barb, Uncle Pete and cousin Ken. “My aunt, uncle and cousin were able to earn a living with 22 jersey cows, some chickens and a garden,” says Rich. From his home in Seattle, Rich would take the milk truck down to Olympia to stay at the farm on weekends. “I didn’t like being indoors,” he says. He learned to hunt and fish with his uncle, and camped by the river on summer nights.

The Ockfen farm is still working today, run by Deb and Mel Lowe, who took over management for the Ockfens in 1980. The Stewart-Deschutes Preserve and the Stewart “44” buffer the farm on two sides. Rich would like both people and wildlife to enjoy the quiet, undisturbed beauty. He still visits and frequently walks the trails to see his favorite spots, including a 10-foot diameter cedar snag left from a turn-of-the-century fire.

Part of the Stewart-Deschutes Preserve is riparian forest containing a broad

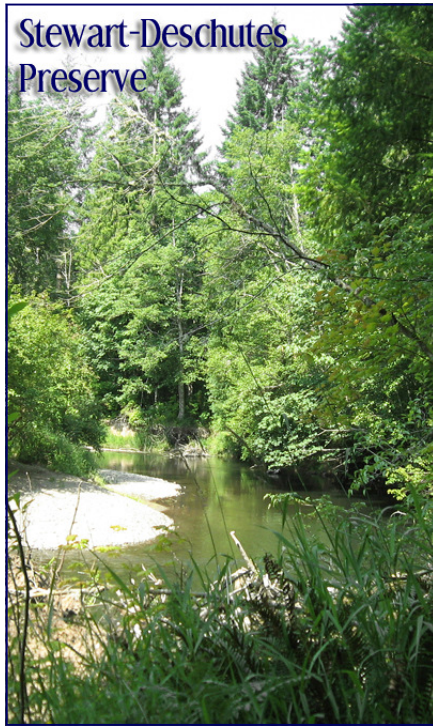
continued on page 3



continued from page 2

diversity of trees including Oregon ash, bigleaf maple, western redcedar, Douglas-fir and red alder. The remaining 45 acres is in the floodplain of the river, which regularly overflows its banks. Replanted after being logged in 1995, it is primarily Douglas-fir, with western redcedar and red alder interspersed throughout. As this new forest matures, it will provide the river with the needed large woody debris, like Rich's cedar, and lessen erosive sediment transport into the river.

Stewart-Deschutes Preserve



Carlin Guthrie

Though Tumwater Falls acts as a natural barrier to fish migration, the Deschutes has supported salmon and other anadromous species since a fish ladder was constructed in 1954. Self-sufficient spawning populations of coho and chum salmon, as well as cutthroat and steelhead trout from the Deschutes, constitute a substantial portion of South Puget Sound sport and Indian Treaty fisheries. The wide riparian buffer and off-channel habitat found on the Preserve are essential for spawning and rearing, and for providing refuge for juvenile and adult salmonids during peak river flows.

The property also supports a wide variety of wildlife, including deer, black bear, fox, bobcat, coyote and more. Landbirds such as ruffed grouse, northern flicker, woodpeckers and red-tailed hawk are plentiful.

Both the Stewart Easement and new preserve are

part of a 500-acre wetland/riparian complex that Capitol Land Trust is working to conserve within the next two years. This ecosystem is vital to maintaining water quality of the Deschutes River and the fish and wildlife that depend on it. Rich Stewart and his family's deep connection to this land has been crucial to its preservation, and we owe them a debt of gratitude. Rich and his wife Sharon now live on a small farm in Mount Vernon where they are "learning how to live a wholesome life." ❧

Lisa Johnson is a family physician and member of Capitol Land Trust.

Receiving a 110% Tax Benefit for Your Donation to Capitol Land Trust

By Matthew Jarvis

While "giving it 110%" is a tired (and illogical) motivational line, when it comes to the IRS and your donations to Capitol Land Trust, it is possible to receive a tax benefit exceeding the amount of your donation.

Let's say you are planning to make a \$5,000 donation to Capitol Land Trust. If you make this donation with a check, you will generally be allowed to deduct the entire donation on "Schedule A" of your tax return. If instead you donated \$5,000 of Apple stock, for which you had paid \$2,500, not only would you receive a \$5,000 deduction, but you would have avoided reporting \$2,500 of capital gains.

In this example you would have received a 150% tax benefit (\$7,500) for your donation. This strategy works for almost any investment that you have owned for more than 12 months, including real estate and partial business interests. Gifts of investments can be made directly to Capitol Land Trust or be facilitated through a donor-advised fund such as those offered by Schwab, Fidelity and several community foundations.

Regardless of its structure, your donation to Capitol Land Trust will directly support conserving essential natural areas and working lands. Please consult a qualified financial planner and/or accountant to learn more about this strategy. ❧

Matthew Jarvis is a partner at Jarvis Financial and actively supports numerous community organizations.

Thank You Project Partners:

WA Recreation & Conservation Office, WA Salmon Recovery Funding Board, Rich & Sharon Stewart, Squaxin Island Tribe, WRIA 13 Lead Entity and ADESA, LLC



Breakfast continued from page 1

Conservation Award: Jean Takekawa and John Konovsky.

Jean Takekawa, recently retired Nisqually National Wildlife Refuge Manager, was recognized for her “exceptional leadership, guidance and gentle wisdom - and for the enduring legacy she is leaving the people and wildlife of Washington State.”

Squaxin Island Tribe Environmental Program Manager John Konovsky was honored for his years of service on Capitol Land Trust’s board of directors and for his “common sense approach to science that has inspired dialogue, collaboration and action around the future of salmon, the Salish Sea, and all of us who inhabit this region.”

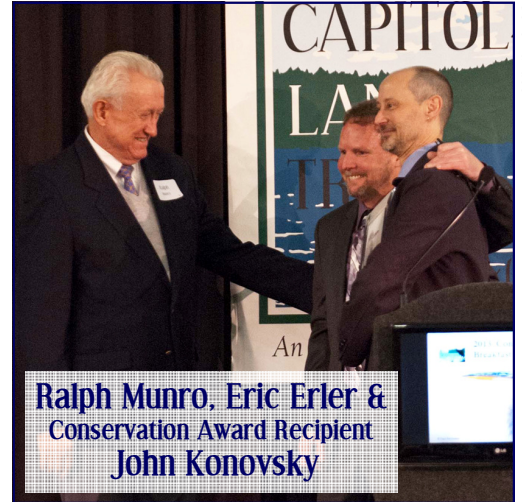
Olympic National Park Public Affairs Officer Barb Maynes rounded out the morning with a fascinating presentation on the Elwha restoration project taking place on the Olympic Peninsula. The largest dam removal project in U.S. history, restoration of the Elwha River has had profound effects on the ecosystem and the myriad of species that live there, including humans. To find out more about the Elwha watershed and what is happening there, please visit www.nps.gov/olym/index.htm. ☼

Thank You Event Sponsors:

CONFEDERATED TRIBES of



Gene Pardee



Gene Pardee



Gene Pardee



Nichon Thorstrom-Smith



Gene Pardee



Nichon Thorstrom-Smith



Gene Pardee

Chum Salmon Find a Haven at Allison Springs

By Chris Maynard

Allison Springs, located at the southern end of lower Eld Inlet, is an ideal place for chum salmon. This is because the Springs supply a steady flow of fresh water, away from the scouring damage caused by high waters in McLane Creek during winter rainstorms. Chum are our most abundant salmon in the South Sound. Because of Capitol Land Trust's work to restore Allison Springs, the chum are even more prolific.

I became interested in the lower Eld Inlet area 25 years ago. The WA Dept. of Fish and Wildlife used to rear and release juvenile king salmon using Allison Springs water. When the up-to 40-pound adult fish returned, I seemed to be the only one who fished for them below Mud Bay Road. That is, besides an old-timer who occasionally showed up with a stout rod and a large treble hook. At low tide, I would spot a swirl in one of the shallow pools and maneuver through the mud to offer a shrimp, practically placing it in the salmon's mouth. I kept my fishing spot secret because the fish were in silvery good condition and quite tasty. When the rearing operation was abandoned and the spring water diverted for use by city residents, the salmon disappeared. With the 2011 restoration of the estuary, led by Capitol Land Trust and South Puget Sound Salmon Enhancement Group in partnership with the City of Olympia, adult chum arrived by the hundreds.

These days in southern Puget Sound, chum salmon spawn in the fall. Unlike silver, sockeye, steelhead, and king salmon, they don't jump to negotiate falls and log jams but can only swim over obstacles. So here they seek the lower parts of the creeks for suitable gravel to lay their eggs. In the lowest reaches of South Sound creeks, they spawn almost into the muddy salt-water estuaries.

The gravel these fish need does not have to be totally free of muck because the fish clean it out with their tails. But to be successful, they need a certain amount of current. The flowing water both carries away the sediment and brings in oxygen for the eggs that the adult females bury deep in the gravel.



Female Chum Salmon, *Oncorhynchus keta*

How quickly the pea-sized eggs hatch depends on how warm or cold the winter months are. However, at Allison Springs, the water temperature remains constant so the timing of the hatch should be the same from year to year. When the tiny fish hatch the yolks are still attached. They spend a little while in the gravel getting used to life until they absorb their yolks. Then they emerge en masse and head directly to the estuaries where salt meets fresh water.

At low tide in March or April, if you walk down below the Mud Bay bridge and look carefully at the water a couple of feet from the shore, you are likely to see thousands of juvenile chum salmon less than an inch long, pointing their noses into the current. They are feeding on tiny creatures that have in turn been nourished by the decomposing bodies of the young chum salmon's parents. Soon they will move further into the bay to begin their lives in the ocean. In three or four years, most of the survivors will return. ❧

Chris Maynard works both as a self-employed artist and for the WA Dept. of Ecology's Water Resources Program. He has a passion for all life, especially fish and birds - which shows in his artwork-with-feathers world.



Capitol Land Trust Applies for Accreditation

By Caitlin Guthrie

Capitol Land Trust is engaged in the application process to secure national accreditation. The accreditation program, run by the Land Trust Accreditation Commission, recognizes land conservation organizations that meet national quality standards for protecting important natural places and working lands in perpetuity. The Commission is an independent program of the national Land Trust Alliance (LTA).

Accreditation provides public recognition of land trusts that are engaged in the long-term protection of land in the public interest. It increases public awareness of, and confidence in, land trusts and habitat conservation. The accreditation seal is a mark of distinction in land conservation - recognizing organizations for meeting national standards for excellence, upholding the public trust and ensuring that conservation efforts are permanent.

Bonnie Bunning, Capitol Land Trust Board President, sums up our reasons for seeking accreditation as follows: "accreditation is an important step for the Trust, because it will give assurance to others – members, donors, grantors, and sponsors – that their investment in our organization is a solid one."

Since the accreditation program started in 2007, 201 of the nation's approximately 1,700 land trusts have been accredited. Capitol Land Trust hopes to be next!

To qualify, we have worked many hours over the past several years. We have established and revised over 20 policies, reaffirming that our fiscal, administrative and land stewardship practices meet the highest standards. In our application for accreditation, we must demonstrate how we implement those policies.

The process has strengthened Capitol Land Trust and the recognition of accreditation will be one of the most important accomplishments of the Land Trust over its 26 year history. ☼

*Caitlin Guthrie is Capitol Land Trust's
Program Excellence Coordinator.*

Public Notice of Application for Accreditation

The land trust accreditation program recognizes land conservation organizations that meet national quality standards for protecting important natural places and working lands forever. Capitol Land Trust is pleased to announce it is applying for accreditation. A public comment period is now open.

The Land Trust Accreditation Commission, an independent program of the Land Trust Alliance, conducts an extensive review of each applicant's policies and programs. The Commission invites public input and accepts signed, written comments on pending applications. Comments must relate to how Capitol Land Trust complies with national quality standards. These standards address the ethical and technical operation of a land trust. For the full list of standards, see www.landtrustaccreditation.org/tips-and-tools/indicator-practices.

To learn more about the accreditation program and to submit comments on Capitol Land Trust's application, visit www.landtrustaccreditation.org. Comments may also be faxed, emailed or mailed to:

Land Trust Accreditation Commission
Attn: Public Comments
36 Phila Street, Suite 2
Saratoga Springs, NY 12866
info@landtrustaccreditation.org
(fax) 518-587-3183

Please submit comments by June 2, 2013. ☼

"The accreditation seal is a mark of distinction in land conservation; recognizing organizations for meeting national standards for excellence, upholding the public trust and ensuring that conservation efforts are permanent."

Annual Report to Members 2012



In 2012, Capitol Land Trust celebrated its 25th anniversary. What started as a small group of neighbors working collaboratively with a developer to conserve important wetlands along Woodland Creek has now grown into a thriving organization with more than 1,400 members in eight states. Together we have nurtured the growth of our conservation and stewardship program to encompass the conservation of more than 5,000 acres in four southwest Washington counties. Your financial support and commitment has enabled Capitol Land Trust to become a community leader, recognized for our unique ability to bring uncommon partners together around shared goals.

Sustaining any nonprofit organization for a quarter of a century is an achievement of which we can all be proud. But it's just a start. Considering that a western redcedar can live up to 1,000 years, as responsible stewards of the land, clearly we have more work to do.

To raise awareness of the need to sustain southwest Washington's essential natural areas and working lands, at the end of 2011 we defined a set of challenges for the coming year. We said that in the coming year we would conserve 250 acres of working farmland. In response, we conserved 510 acres of farmland. We said that we would conserve 2.5 miles of shoreline habitat and we did conserve exactly that of freshwater and marine shorelines. And finally, we challenged ourselves to conserve an average of 2.5 acres per day for an entire year. Between December

2011 and December 2012 we conserved 960 acres or 2.6 acres per day.

By meeting each of these challenges Capitol Land Trust has demonstrated the importance of a strategic and collaborative approach to conservation. We also hope you will agree that this success shows that your investment in the mission and work of Capitol Land Trust is a good one.

Your trust and support is what has enabled Capitol Land Trust to grow from its humble beginnings to a recognized conservation leader. On behalf of the entire staff and board of directors - Thank You! ☘

Eric Erler
Executive Director

Stewart-Deschutes Preserve
59 Acres



Laurence Reeves

Tilley East Preserve
(Expansion)
68 Acres



Laurence Reeves

Black River Farm
Conservation Easement
510 Acres

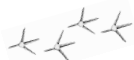


Steve Payne

Granquist-Goldsborough
Creek Preserve
60 Acres



Laurence Reeves



Thank You 2012 Financial Supporters!

\$10,000 and above

Community Investment
Fund of the Tides
Foundation
James & Diana Hanson
Estate of Margery Sayre
Jane Willits Trust
Richard & Sharon Stewart
Vannerson Family
Advised Fund

\$5,000 - \$9,999

Connie Harrington &
Bill Carlson
Taylor Shellfish Company, Inc.
Tom & Priscilla Terry

\$2,500 - \$4,999

The Alpine Experience
Anonymous
Bob & Clare Carson
Capital Medical Center
The Chehalis Tribe
Green Diamond Resource Co.
Ken Guza & Diana Larsen-Mills
Puget Sound Energy
Puget Sound Energy
Foundation
Sandra & Fred Romero
Sterling Bank

\$1,000 - \$2,499

Anonymous
Walter & Linda Briggs
Ernie Brooks
Doug Canning
Jill & Mike Chase
Cushman Law Offices, P.S.
Sandy & Laura Desner
John & Marilyn Erickson
Nancy Garred
Timothy Gregg
Lisa Johnson & Tim Kelly
Joy & Bill Justis
John Konovsky & Don Martin
Steve Lundin &
Linda Bondurant
JB McCrummen
Moore Trees, Inc.
Bonnie & Ken Morimoto
David & Jane Nowitz
Paddy & Edward O'Brien
Olympia Federal Savings
Olympia Food Co-op
Port Blakely Tree Farms
Peter Riggs
Mike & Ann Ryherd
Bill Scheidt & Melody Mayer
Bart Schmidt
Bob & Jo Ann Scott
Pene & Jim Speaks
Missy Watts
Tom & Charlene Wynne

\$500 - \$999

Richard Anderson
Jeannette Barreca & Bill Yake
Bean Gentry Wheeler & Peternell
Sharon & Dwight Bergquist-Moody
Penny Black & Rich Boyesen
Bonnie & Paul Bunning
Community for Interfaith Celebration
Eric Erler
Neil & Cheryl Falkenburg
David & Gretchen Gacetta
Jim Geist
Dorothy Gist
Peter & Wendy Goldmark
Jack & Susan Havens
HomeStreet Bank
Steve & Beth Hyer
Jarvis Financial Services
Ed & Jane Laclergue
Don & Carol Law
Terry & Bonnie Liberty
Wayne & Roxanne Lieb
Stan & Hazel Loer
Mike & Teresa McGee
Skip & Judy McGinty
Robert & Marion McIntosh
Carolyn McIntyre

Elizabeth McManus
Sam Merrill
Mark & Candace Messinger
Kit & Meryl Metlen
Arden Olson
Stetson & Linda Palmer
Miguel Perez-Gibson
Eika Petermann
Cleve & Marty Pinnix
Plauche & Carr LLP
Peter Reid & Barbara Ogle
Gerry Ring Erickson & Lynda
Ring-Erickson
Velma & Doug Rogers
Jeff Rudeen & Shelley Kirk-Rudeen
Seattle Shellfish
Mary Skelton & Paul Meury
David & Lisa Smith
Ed & Lasha Steinweg
Gerald Suzawith & Kristin Blalack
Paula Sweeden
Jean Takekawa & Ed Forner
Quita & Joe Terrell
Karen Valenzuela
Mark & Kathy Wagner
Ross & Cathy Wiggins
Jill Will
Vicki & Steve Wilson
Cindy Wilson & Bill Graeber
Lenny Young

\$250 - \$499

Ruth Abad
Mary Jane & Fred Adair
Anonymous (x 4)
Mark & Kathie Bauer
Ken Berg & Jan Weydemeyer
Kathy Berndt & Steve Albrecht
Ann Berry
Brett & Lisa Bishop
Thera Black
Karen & George Bray
Bob & Laurie Buhl
Tim & Nora Burke
Dan & Darci Coyne
Diane Dakin & Steve Bray
Emmett & Phyllis Dobby
Lee Doyle
Robert & Heidi Droll
Cheryl Duryea & Mike Murphy
Richard Easterly & Debra Salstrom
Carl Erler & Merna Maxwell
Mary Ann Firmin
Mark Fleming & Maggie Reardon
Joe Ford & Mary Wilkinson
Kara & Chuck Fowler
Jay Frederickson
Frost & Company
Sam & Christine Garst
Don & Karen Guyot
Jane Habegger & Bill Lynch
Bill Halbert
Karen Laing Hall
Jerry & Val Handfield
Dirk & Dixie Havlak
Bobbi Hickox & Bob Briggs
Woody Hill
Tom & Lynne Holz
John & Cindy Hough
Sarah Isham
Jean Iverson
David & Nancy Jamison
Norman Johnson
Jeff Johnston & Kati Thompson
Bonnie Kavanaugh
Steve & Terry Kelso
Steve & Ellen Landino
Kathy Leitch & Robert Delaney
John & Linda Lentz
James & Patricia Leonard
Marijo Loftis
Mary Longrie
Kevin Lyon
Steve Macuk & Binda Douglas
J. Paul & Robyn Malmberg
Marilyn Burns Fund
Nikki McClure & Jay T. Scott
Tom McDonald & Anne Hirsch
Chris & Debbie Meehan
Patrick Morin
Barbara Morson & Bill Stoner
Sally Parker
John Pearce
Dennis & Christine Peck
Dave & Maria Peeler
Kathleen Peppard & Jan Vleck
Diane & Marc Perry
Shane & Janet Peterson
Drew & Kylie Phillips
Narda Pierce & Russ Cahill
Jerry & Carrol Probst
Tim & Melanie Ransom
Emily Ray & Jim Lengenfelder
Marv & Mary Lynne Reiner

Greg & Anne Reub
Terry Rudeen
Paula Salewsky
Art Seipel
Cheryl Simrell King
Jack & Jean Sisco
Sandia Slaby & Stan Butler
John Sladek
Eric Slagle & Nancy Hanna
Sherwood & Judith Smith
Oscar & Barbara Soule
Ted & Donna Steudel
Henry Stockbridge
David & Kathleen Strelloff
Gail & Wally Suydam
Mike Szramek
Bill & Betsy Taylor
Joe & Chris Townley
Chuck & Dorothy Turley
Sue Ujic & Jared Snyder
Christina & Jose Valadez
Sally Vogel
Cynthia Walker & Larry Seale
Dave Warren & Ruth Musgrave
Michael & Lynn Welter
Chris Wickham & Stephanie Claire
Cathy Wolfe
Bonnie Wood
Andrew Worth
Worth Law Group
Gary & Sandra Worthington

\$100 - \$249

George & Brenda Ackley
Doug Allen & Jocelyn Lyman
Janet Anderson
Anonymous (x 2)
Jim & Christi Bachmeier
Tom Badger & Wendy Gerstel
Lori & Norbert Bame
Frank Baretech
Andrew & Lisa Barks
Bob Barnes
Tanya Barnett & Jay Geck
Gordon Baxter
David Beigh
Maggie Bell-McKinnon &
John McKinnon
Gary Benson
Jeu & Stephanie Bishop
Ann & Nigel Blakley
Steve & Peggy Bloomfield
Kyle Blum
Jane Bogle
John Brottem & Susan Hettinger
Dennis Brown & April Scharer
Ron Bruchet
Pete & Carole Butkus
Ann Butler & Paula Connelley
Donna Buxton
Kathleen Byrd
David Sederberg & Reiko Callner
Ken & Katie Cameron
Carolyn Carlson & Ed Dee
Warren Carlson & Pat
Gallagher-Carlson
Bruce Carter & Betty Sanders
Charles & Margaret Chambers
Jane & Steve Chavey
Connie Christy
Virgil & Barbara Clarkson
Cece Clynch & Jim Albert
Sonia & Bob Cole
Carolyn Comeau
Jen Cook-Karr
Diane & Rick Cooper
Lynn Corliss
Glen & Sally Crandal
Raquel Crosier
Greg & Ann Cuolo
Jack & Jane Curtright
Carol Cushing
Jeanne Cushman
Dan Cushman
Clydia Cuykendall
Liz Dalton & Steve Brink
Meriel Darzen
Birdie Davenport
Don & Cherie Davidson
Jennifer & Jeff Davis
Jeremy Davis & Larry Horne
Warren & Janet Dawes
Andy Deffobis
Doug & Merrilee DeForest
Eric & Rain Delvin
Steve & Carmen Desimone
Bill Dewey
Joe Digranes & Linda Chesnut
Kim Dinsmore
John Dodge
Mark Doumit
Dee & Gene Eckhardt
Martha Eden
Robert & Ann Edington
John & Jo Edwards
Larry Eickstaedt & Joan Lynch
Carol & Larry Else
Enterprise for Equity
Sharon Estee
Evergreen Rowing
Duane & Jonnel Fagergren
Fred & Bonnie Finn
Marianne Finrow
Alyssa Firmin
Alison & Martin Fisher
Jeff & Stacy Fisher
Mark Foutch & Janet Charles
Russ Fox & Carolyn Dobbs
Karen Fraser
Mary Frye
Kaylin Furry
Holly & Jim Gadbaw
Rich Gailey & Laurie Rogers
Bruce & Robin Galvin
Fred & Mary Gentry
Gery & Valerie Gerst
Russ Gilsdorf
Rosalie Gittings
Jewel & Christine Goddard
Kelly & Melanie Golob
Jeff Goltz & Mary Welsh
Jay & Susan Gordon
Patti Grant
Connie Gray & Ann Tolo
Janice Greenfield
Tamilee Griffin
John & Mary Grimm
Peter Guttchen & Kristina Smock
Kathy Haigh
Steve Hall
Jon Halvorson
Anne Hankins & Roy Short
Rob & Patricia Carol Harper
Bob Hartsell
Hilari Hauptmann & Jody Rush
Tom Hausmann
Linda Heckel
Peter Heide
Pamela Hetland
Rich Hoey & Stacey Waterman-Hoey
Edward & Carolyn Hoffman
Linda & David Hoffman
Henry Hollweger
Patrick & Whitney Holm
Craig & Betty Holt
Carol Horner
George & Lou Anne Houck
Brian Hovis & Deborah Ross
Elsi Hulseay
Amy Hunter
Eric Hurlburt
Steve & Val Hyer
Karl Jacobs & Tamara Crane
Veronica & Ross Jarvis
Jessica McKeegan Jensen
Beth Johnson
Eve Johnson
Sharon & Rodger Johnson
Tom & Marge Juelson
Linda Kahan
Sandra Kaiser & Anders Price
Joe Kane
Heather & Leo Kapust
John Keates
Theresa Keegan
Eileen Keller & Stephen Baker
Kim & Mark Kelley
Nancy & Pete Kmet
Jeanne Koenings & Daniel Silver
Pamela Krueger
Don Krupp & Susan Carr
Stephen Langer
Nancy & Catherine LaPointe
Ron & Jane Lawson
David Lazar & Ann Evans
George Le Masurier
Chuck & Sue Lean
Dan & Dottie Lehuta
Bill Lepman & Verena Zellar
Mary Linders & Peter Plimpton
J. A. Littooy
Connie & Mark Lorenz
Ron Lovasz
Bruce Lund & Nancy Pritchett
Jim & Denise Lynch
Dana & Alan Lynn
William Lysak
Jean MacGregor & Rob Cole
Fred & Laurie MacInnes
Robert Mackey
Anand Malialkal
Robert Malooly
Jay Manning
Wayne Marion
Mike Marohn
Noel Marshall
Stuart Martin & Maris Peach
Marybeth Matlock

Chris Maynard
James & Carol McClelland
Marta McClure
Kathleen McDowell
Pat McLachlan
Janet McLane & Bruce Rouillard
Neil & Nancy McReynolds
Marlene Meaders
Sam & Jennifer Meyer
Shawn Meyers
Allen Miller
Anne & Dennis Mills
Steve Milner
Cindy Mitchell
Laura & Chris Mondau
Cliff & Mea Moore
Jamie Moore & William Harris
Patti & Victor Moore
Sharon Moore & Steve Curry
Tom Morrill
Maureen Morris
Beth Morrison & Geoff Crooks
Lyle & Valinda Morse
Alan & Jane Mountjoy-Venning
Virginia Mouw
Michael Moy & Caitlin Guthrie
Ralph Munro & Nancy Bunn
Karen Munro
Linda Murphy & David Cheal
Mike Murphy
Bryan & Sandy Nelson
Sen. Sharon Nelson
Donna Nickerson & Uwe Tietze
Greg Nordlund
Kathy O'Connor
Linda Szymarek Oestreich
Jane Offutt
Joyce Ogden
Peter Okada
Tom Oliva
Mary & Scott Oliver
Orca Books
Marianne Ozmun
Barbara Packard
Andrea Parrish & Walter Weinberg
Michael & Sharon Parsons
Marianne & Ken Partlow
Craig Partridge & Lou Ann Dunlap
Ernie Paul & Michael Leigh
Steve & Susan Peterson
Pierce County Aids Foundation
Blair Prigge
Paul & Angel Przybylowicz
Chris Quinn-Brintnall
Jim & Carol Rainwood
Ben & Jeanne Ray
James Reddick
Rob Rice
Darin Rice
Bill Robinson
Leslie & Henry Romer
Mary Rosendahl
Rhys Roth
Bonnie Ruddell
Lee & Darlene Ruddy
Catherine Rudolph
Jim Rudy & Lucia Perillo
Deborah Ruggles & Carol Wood
Meri Russell
Dick & Diane Russell
Douglas & Lillian Ryan
Majken Ryherd
Chris & John Sabo
Robert & Barbara Sapp
John & Anna Scherer
Lynn Schneider & Oscar Munoz
Norma Schuiteman
Richard & Laurel Seaman
Cheryl Sebaska
Dave & K Seiler
Mary Shinn
Joe & Bonnie Shorin
Diana Smith
D. Peggy Smith
Donna Snow
Greg Sorlie & Gale Blomstrom
Susan Southwick & Joseph Joy
Brian Staffki & Jennifer Kenny
Aaron Steele
Mark Steepy
Scott Steltzner
Wendy Sternshein
Eric & Caroline Stevens
Malcolm Stilson
Skip & Gloria Strait
Karin Strelloff & Andy Anderson
Kip Summers
Kristin Swenddal & Rich Nafziger
Joyce Targus & Glenn Green
Quintard Taylor
Polly Taylor
Sarah & Andy Thirtyacre
Thurston County Realtors Assoc.
Steve Tilley & Christine Parke

Thank You 2012 Financial Supporters! Continued

Reed Tindall & Barb Walker-Tindall
Sally Toteff
Amy & Gerald Tousley
Mary Traber
Carolyn Trefts
Preston & Mary Lee Troy
Tara Tumulty
Bob & Joyce Turner
Susie Vanderburg
Ms. Vanschravendijk
Lauri Vigue
Robert & Jo Wadsworth
Rick & Kara Walk
Lee Walking
Martin & Marilyn Walther
Ruth Weber
Nicki & Ed Weber
Steve & Wendy Weeks
Robert & Christine Weisel
Ed & Lenora Westbrook
Dorothy Wilke & Mike Wills
Jean Wilkinson & Jim Fulton
John & Lynn Williams
Robin Williams
Joe & Marilyn Williams
Ward & Rita Willis
Jim & Shirley Wilson
Scott Wilson & Barbara Kingsley-Wilson
Sheila Wilson
Shelby Wilson
Lance Winecka & Amy Hatch-Winecka
Nancy Winters & Martin Werner
Bob & Joni Wolpert
Frona Woods
Mark & Linda Woytowich
Joan & Greg Wright
Eitan Yanich & Katie Quimby
Alex Young
Chris Zipperer

\$50 - \$99

Scott Ahlf
Susan & Rob Ahlschwede
William Aldridge
Gerry Alexander
Jay Allen
Mary Jo Andrews & Jack Hulsey
Anonymous
Kay Atwood & Don Lennartson
Rick & Patty Bacon
Greg & Diana Bargmann
Charles & Kathy Bartleson
Dave & Nancy Bayley
Jon Bennett
Tom Bjorgen
Sam & Linda Bovard
Patt Brady & Fred Fiedler
James Brooks
Peggy Bruton-Edwards & David Edwards
Jason & Melissa Buckingham
Renee Buell & Jim Scott
Capitol Pacific Reporting, Inc.
Patti Case
Martin Casey & Brian Cole
Terry & Lynn Chapin
Sarah & Christopher Clinton
Barbara & Tom Cook
Cooper Point Association
Kaleen Cottingham
Keith Cotton
Mariella Cummings
Alyson & Joshua Cummings
Janet Cutlip
Stacy Cutlip
Aaron David
Dale Davis
Lisa Dennis-Perez
Pat & Maria Dunn
Fran Eide
Aaron Everett
Larry Fairleigh
Daniel Farber
Ben Farrow
Frank & Jacklyn Feeley
Tom & Suzanne Fell
Sharon Ferguson
Shirley & Wayne Flaherty
Lori & John Flemm
Ray Foisy
Kay Foster
Wendy & Frank Galloway
Roger & Jennifer Gardner
Michele Garside McCarthy
Jamie & Becca Glasgow
Stuart Glasoe
Matthew Grace
Norma Green
Randall & Linda Greggs
Regina Grimm
Eleanor Grimstad
Gregory Grimstad
Marlene Groening & Jim Kainber

Chuck & Corina Groth
Selden Hall & Cheryl Hanks
Simona Hancock
David Hanna
Judie Hansen
Jim & Carolyn Harmon
Andy Haub
Kim Hawkins
Andrew Hayes & Farra Vargas
Charles & Beverly Heebner
Bill & Terra Hegy
Cheryl & David Heywood
Chris Hibdon
Richard & Kayana Hoagland
Judith Hoefling
Jeni Hogenson
Jennifer Hopper
Alex Hur
Joe Hyer
James J. Stewart Design, Inc.
Diane Jasik
Christopher Jennings & Ann Vandeman
Robyn Johnson & Peter Newland
Nicki Johnson
Stephen Jones
Alvin & Melissa Josephy
Sharon Kemp
Jeanne & Andrew Kinney
Dave Kirk
Anne Kirske
Tim Koehler
Pete & Lillie Kruger
Lynus & Mary Alice Kurtenbach
Sarah Levy
Sonny & Diana Lindvall
Karen Lohmann
Nathan Lubliner
Bob Macleod
Susan Macomson
Ellen Madsen
Guy Maguire
Bernadene Main
Erica Marbet
Terry Marker
Susan & Robert Markey
Calvin McCaughan
Ben & Barbara McConkey
Heidi McCutcheon
Dave McEntee
Jean Mead
Merlin Advocates
Dick & Pat Miller
Dave & Dee Milne
Beth Milton
Eric & Paula Moll
Ian Mooser
Jane Morgan
Leslie Morris
Debora Munguia
Arvilla Ohlde
Dave Okerlund
James & Jean Olson
Heath Packard
Jerry Parker
Patrick Pattillo
Sue Patnude
Christina Peterson
Marco Pinchot
Aline & David Pinkard
Rebecca Post
Cynthia Pratt
Erik Price
Bridget Ray
Alan Reichman & Diane Kurzyna
Jack & Donna Rice
June Ringe
Elizabeth Rodrick
Jeff Rounce
Joe Roush & Donna Buntin
Jacky Rudeen
Karl Ruppert
Srey Ryser
Julie Sackett
Cynthia Salazar
Julie & Del Sandberg
Emily & Dave Sanford
Paul & Rosa Sargent
Eric Schallon
Dave & Joanne Schuett-Hames
Galen & Miyoung Schuler
Kathryn Scott & Brian Hall
Jan Seguin
Jonathan & Patricia Seib
Cheryl Selby & Jeff Engle
Justin Shahan
Marjorie & Curtis Smith
Lois Smith
Stuart & Joan Smythe
Barbara Sparrowe
Michelle Stevie
Stormans, Inc
Lon & Virginia Sullivan
Terry Swanson

Randy Swanson
Bob & Carol Swift
Dick Taylor
Pete & Ginny Taylor
Tom Farmer Oyster Co.
Julie Trautman
Jonathon & Pam Turlove
Kris Van Gorkom
Richard Van Wagenen & Carola Norton
Bill & Alice Vogel
Mike & Nancy Walsh
Steve Wang & Kathryn Hamilton Wang
Greg & Laura Ware
M. John Way
Kitty Weisman
Valerie & Bob Whitener
Gary Wilburn
Diane & Todd Wiley
Mimi & Don Williams
Paul Wing
Brad & Laura Wright
Dave & Dolly Yates
Gary Zandell
Tyle Zuckowski

\$1 - \$49

Brian & Jeannie Abbott
Mary Anderson
Anonymous (x 8)
Lotte Armstrong
John Ausnes
Jeffrey Barehand
John Battin
Rebecca & Peter Beaton
Katrina Bloemsma
Allan Borden & Norma Kirmmse-Borden
Shirley & David Bourne
Susan & Jeff Bowe
Bernard Brady
Bryson Bristol
Chris Broullire
Margen Carlson
Linda & Lanny Carpenter
Rebecca Christie
Susan Cierebiej-Kanzler
Glen Cole
Christine Colton
Julie Corwin
Todd Curtis
Thad & Jo Curtz
Leslie Cushman & Jody Smith
Erin Daley
Stephanie DeNune
Christina Donehower
Jane Ely
Don & Vida Farler
Dirk Farrar
Rachel Friedman
Ross & Cathy Gallagher
Leslie Gates
Tom & Virginia Guthrie
Jim & Bobbe Haley
Martha Hankins
Amy & Chad Hargrove
Donna Harris
Dick & Betty Hauser
Brian Hegarty
Cheryl Heinrichs & Chuck Murray
Patricia Helmer
Eduardo & Victoria Hernandez
Elizabeth Hummel & Brian Castillo
E. Ross Irwin
Diane & Laurence Istvan
Karen Janowitz
Mary Knackstedt
Jean Knackstedt
Kristi Knudsen
Don & Carol Kraege
Barbara Kuenstler
Amy Kurtenbach
William & Janet Latta
Cynthia Lind
Ralph Lovelace
Suzanne Malakoff & Jan Cnossen
Georgene & Bill Marshman
Linda Martin
Vicky McCarley
Riley McLaughlin
Wendi Meador
Judy & Steve Metcalf
Philip Moreno
Gita Moulton
David Mudd & Maitri Sojourner
Kyle Murphy
Sean Nelson
Joanne Nichols
Darren Nienaber
Connie & Bob Obedzinski
Mark Pentony
Mark & Jessica Peternell
Mechelle Peterson
Jon Peterson

Becca Pilcher
Marilou Powers
Jordan Rash
Kristen Raymond
Laurence Reeves & Kathy Strauss
Josh & Tameka Riggins
Dave Risvold
Zoe Romero
Sandra Salisbury
Lynn Schneider
Dale Schroeder
Joseph Scuderi
Dave Sisk
Kathryn Smith
Shelley Spalding

Janet Strong
Jill Turner
Derek & Gretchen Valley
Anne Van Sweringen
Travis Vaughn
Paul Venables
Steven Wickstrom
Patricia Winker
Chad Wiseman
Fritz Wolff & Mary McCann
Bruce Wulkan
Josephine Young
Jo Ann & Mikel Young ☘

2012 by the NUMBERS

~280 people volunteered ~1,050 hours

2,800 trees and shrubs planted and
~102,000 ft² of invasive plants removed
on ~10 acres

673 acres conserved on 5 sites

\$2.6 million in conservation funding

1,500+ people attended events;
the Summer Gala and Conservation
Breakfast raised \$110,400

100% of Capitol Land Trust owned
properties and conservation easements
monitored by staff and volunteer
Land Stewards

25th Anniversary Campaign Goals Achieved

(December 2011 through December 2012)

Conserved an average of 2.6 acres per day

Conserved 2.5 miles of shoreline

Conserved 510 acres of working farmland

Schmidt Conservation Easement (Expansion) 5.6 Acres



2012 Financial Status

Year End 2012

Assets

Cash and Cash Equivalents	\$ 436,442
Receivables	76,565
Other Assets*	288,524
Investments	426,178
Conservation Property	8,831,879
Total Assets	\$ 10,059,588

Total Liabilities

\$ 319,427

Net Assets

Unrestricted	\$ 195,355
Temporarily Restricted	712,927
Permanently Restricted	8,831,879
Total Net Assets	\$ 9,740,161

Total Liabilities and Net Assets

\$ 10,059,588

Year End 2012

Revenue

Grants	\$ 2,596,020
Contributions	531,480
In-Kind Revenues	41,006
Other Income	17,052

Total Revenues

\$ 3,185,558

Expenses

Program Services	\$ 2,280,803
Management and General	95,780
Fundraising	60,546

Total Expenses

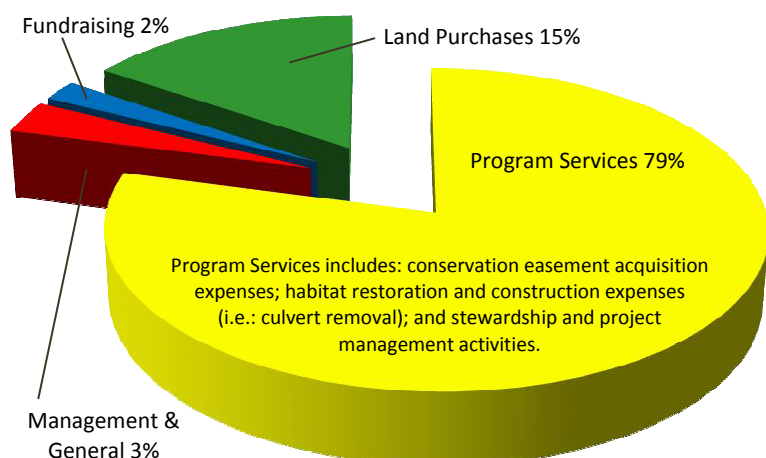
\$ 2,437,129

Land Purchases

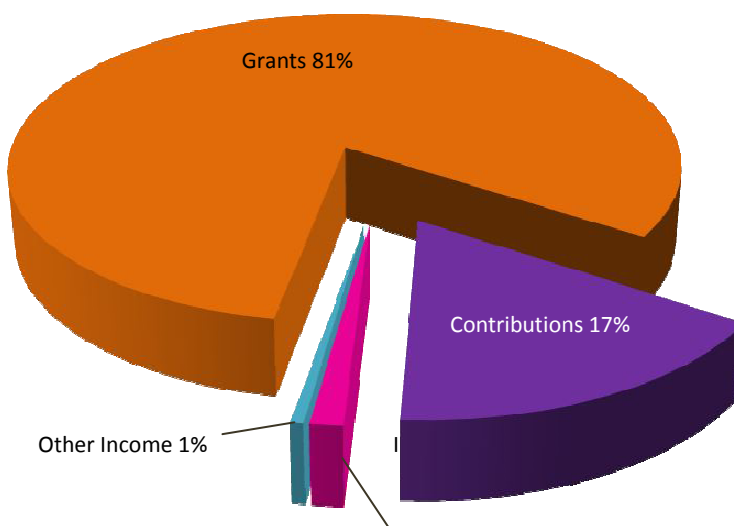
\$ 446,888

*Maytown Conservation Fund

Expenses & Land Purchases



Revenue



Thank You to our 2012 Project Partners

ADESA, LLC, The Alpine Experience, Bartlett Schmidt, Bayfield Resources Co., Michelle Bentley, Black River Farms LLC, The Chehalis Tribe, Climate Solutions, Ducks Unlimited, Granger Appraisal, Greg Richards & Associates, Heernet Foundation, John Drebrick, Lenherr Surveying, PLLC, Lone Cedar 1 LLC, LOTT Clean Water Alliance, Mason Conservation District, Mason County Noxious Weed Board, Mell Family LLC, MTN2COAST, LLC, Natural Resource Conservation Service, Native Plant Salvage Project, City of Olympia, Pacific Coast Joint Venture, People for Puget Sound, Puget Sound Energy, REI, Richard & Sharon Stewart, Salmon Recovery Funding Board, South Puget Sound Salmon Enhancement Group, South of the Sound Community Farmland Trust, South Sound GREEN, Squaxin Island Tribe, Steamboat Conservation Partnership, Stephen Shapiro Commercial Appraisal, LLC, Taylor Shellfish Farms, Thurston Conservation District, Thurston County, Tilley Road LLC, U.S. EPA, U.S. Fish & Wildlife Service, WA Conservation Corps, WA Dept. of Ecology, WA Dept. of Fish & Wildlife, WA Dept. of Natural Resources, WA Recreation & Conservation Office, WRIA 13 Lead Entity, WRIA 14 Lead Entity ☼

Board Transitions

FAREWELL to JOHN KONOVSKY



We sadly bid adieu to John Konovsky, a member of our Board of Directors since 2006 and a supporter for much longer. After many years of working on conservation issues in the South Sound, most recently with the Squaxin Island Tribe, John relocated to British Columbia. John is now developing and implementing plans to conserve important biological and cultural features in the traditional territory of the Tsleil-Waututh Nation which extends from Howe Sound to Boundary Bay and is centered in Burrard Inlet in the greater metropolitan Vancouver area. His partner Don hopes to join John up north within the year. John's significant contributions both to Capitol Land Trust and to land conservation in southwest Washington cannot be overstated. He will be greatly missed! ☘

WELCOME to BILL CARLSON

We are delighted to welcome Bill Carlson as a new member of the Board of Directors. Bill grew up on Bainbridge Island on the homestead of his great grandfather. Surrounded by forestlands, he became enamored with trees, eventually pursuing a career as a tree physiologist. Bill received a B.S. in forest management from the University of Washington. He also holds a M.S. and Ph.D. from The Ohio State University in tree physiology and developmental anatomy. Recently retired, Bill worked in the forest industry for 35 years, the last 30 of which were with Weyerhaeuser. He holds 25 U.S. Patents.

Besides serving on Capitol Land Trust's board of directors, Bill is working to preserve the family farm he grew up on. He is also on the board of Swedish Finn Historical Society, and is a past member of the Bainbridge Island Forestry Commission. Bill is an avid kayaker and hiker. He is a strong supporter of shoreline protection and would like to see more working lands conserved. ☘



WELCOME to EMMETT DOBEY

Emmett Dobey has been involved with Capitol Land Trust for almost 12 years while working with the City of Olympia and Mason County. Most recently, he joined the Board of Directors. Welcome Emmett! Emmett is a transplant to the Pacific Northwest from Oklahoma; moving to the Oregon coast early in his career as a land use planner and natural resource manager.

Emmett holds a B.S. in Biology and a M.S. in Environmental Science. His work opportunities have taken him from Oklahoma to Oregon, to the Music City (Nashville, Tennessee), to Shelton and Olympia. He currently works for the Washington State Association of Counties. His work experiences have focused on city and rural planning, preparing for climate change, solid waste management, water quality protection, and helping communities become more sustainable. He hikes, bikes, sails, fishes, and is devoted to University of Oklahoma football in the fall. Emmett feels the knowledge he gained during his years working with local governments and his strong interest in sustainability will assist Capitol Land Trust in building the relationships necessary to meet our mission. ☘





Legacy Members Tour Twin Rivers Ranch



By Tom Terry

Each year Capitol Land Trust hosts a special field trip for Legacy Members. Our most recent outing was held last November at Twin Rivers Ranch Preserve. Legacy Members include those who have donated easements or properties to Capitol Land Trust or have included Capitol Land Trust in their estate plans.

The odds were against us from a weather standpoint, but the sixteen Legacy Members that joined staff and Board members at Twin Rivers Ranch were not deterred. The day threatened to be a typical cold and wet Pacific Northwest experience, but as we gathered, the early-morning fog lifted, the clouds opened and sunshine streamed across the marsh, estuary, creeks, surrounding woodlands and fields!

Bald eagles were perched nearby in tall Douglas-firs along Cranberry Creek, watching for spent salmon that had spawned below. Chum salmon (and a few Chinook) were holding in deep pools and then moving upstream to fulfill their life-ending cycle of spawning and renewal.

Eric Erler (Executive Director), John Konovsky (Board Member) and Guy Maguire (Stewardship & Restoration Coordinator) provided Legacy Members with the history and ecological significance of the Ranch. They talked about the many project partners who helped the Trust purchase the Ranch, the generosity and foresight of the Rohde family who wanted their land conserved, and the importance of protecting this unique landscape at the head of Oakland Bay. Members also toured the ongoing restoration projects on the property. A delicious hot lunch topped off the tour. We went home inspired that we were part of such great work.

Our next Legacy Member outing is a tour of the Wynne Farm in beautiful Schneider Creek Valley. The trip takes place Saturday, July 20, 2013. Legacy

Members will be notified when the planning details are complete. If you have included Capitol Land Trust in your estate plans, please let us know so you can join us on this special outing. ☘

Tom Terry is on Capitol Land Trust's Board of Directors and serves as Board Secretary.

Why I'm a Legacy Member

By Dorothy Gist

I'm hoping to live to 125 and die happily riding my bike off a cliff as my bank account hits \$0. But since that is highly unlikely, I decided to share my estate with my three kids and my two favorite organizations. I chose Capitol Land Trust because it works to protect land and habitat into perpetuity. I appreciate that my savings will be used to maintain beautiful natural areas in this community that I love. I imagine that someday a great, great grandchild may walk CLT land on the shores of Totten Inlet and be charmed by its beauty and be inspired to protect the world she's living in. She may be able to enjoy abundant examples of formerly rare plant and animal life.



Another reason I selected Capitol Land Trust is because I have observed their efficient and effective use of funds - how they use donations to multiply their value by obtaining grants and cooperative agreements with a large number of other organizations. They know how to make my donor dollars reproduce like bunnies.

Capitol Land Trust is named in my will and is listed as a beneficiary of an investment account. It was easy to do. I hope other members will do the same. ☘

Dorothy Gist has been of member of Capitol Land Trust since 1997.

Carnivorous Plant Thrives in Protected Bog

By Guy Maguire

The phrase “bogged down” is a common way of saying something is stuck or hard to move. This phrase originates from the word “bog,” (Irish/Gaelic in origin, meaning soft), a highly distinctive type of wetland. Also known as a muskeg, mire, or quagmire, a bog is characterized by peat, which is a deposit of dead plant material. Bogs are saturated with water, which creates anaerobic (low oxygen) conditions in the soil, limiting fertility and slowing the process of decay. These conditions lead to the formation of layer upon layer of peat, sometimes up to 20 feet deep!

Bogs occur all around the world, mostly in the northern hemisphere. Because of the specialized conditions in bogs, they provide habitat for many endemic plant and animal species, and are important for global biodiversity. However, because peat is a valuable source of fuel, peat bogs are mined worldwide to produce energy. Bogs are also commonly removed to provide land for agriculture, and the peat is harvested for use as a gardening supplement.

In southwest Washington, we are lucky to have a few remaining bogs, including the Springer Lake bog, preserved by Capitol Land Trust in 1998. This bog grows out from the edge of the lake, slowly spreading in mats over the water. This type of bog is called a quaking bog, or schwingmoor, meaning “swinging moor” because of the way the ground sways and buckles when you walk on it.

I first visited the bog at Springer Lake Preserve during an annual monitoring visit, and as we walked out on a downed tree to get an up-close view of the bog, we noticed a small red plant growing thickly throughout the spongy turf. Upon closer inspection, we found it to be a species of *Drosera*, or sundew, known for its ability to catch and eat insects. The plant has evolved sticky glands on each paddle-shaped leaf, covered in sweet mucilage, which draws in flies and other insects looking for a meal. Sundew plants can actually “sense” when something is touching them, and will curl to completely enclose the insect as quickly as possible, sometimes in as little as five minutes! Perhaps not lightening speed, but for a plant it’s quite a feat. As it curls, the sundew excretes a cocktail of chemicals that liquefy the insect and release the nutrients to be absorbed by the leaf surface.

Though the global population of *Drosera* species is relatively healthy, various states within the U.S., as well as some countries, have listed them as endangered or threatened because of the rapid loss of their only habitat: bogs. To learn more about bogs and the unique species like sundew that inhabit them, Capitol Land Trust will be hosting a field trip to the Springer Lake Preserve this June. See page 13 for more details. ☼

Guy Maguire is Capitol Land Trust’s Stewardship & Restoration Coordinator.



Drosera rotundifolia



Springer Lake Bog

Guy Maguire

Guy Maguire



THANK YOU VOLUNTEERS ~ You make all the difference in the world!

Kathleen Ackley



Randy Yaple



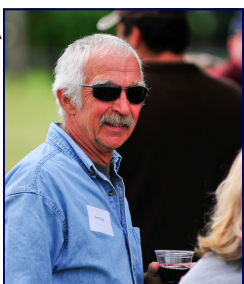
Brad Manchias



Randy Yaple



Steve Payne



✿Gala Volunteers Needed✿

Capitol Land Trust's Summer Gala is fast approaching and volunteers are what make this annual event fun, successful and even possible! Make this summer a memorable one by helping put on one of the region's signature events! Listed below are just a few of the areas where volunteers are needed. If you don't see something that interests you, let us know and we will work with you to find something that suits you.

✿AUCTION

Volunteers needed to solicit and collect auction donations, create auction program and bid sheets, manage the set-up of the auction at the event and the distribution of goods once they are purchased.

✿FOOD & DRINK

Volunteers needed to solicit and collect food and drink donations. Volunteers also needed to coordinate/create the appetizer menu and table set-up, including food preparation. Volunteers needed to serve dinner, and prep and serve dessert.

✿MARKETING

Volunteers needed to run the Gala marketing campaign. This includes helping design the invitation, ads and posters, working with media, maximizing social and internet marketing, and exploring new ways to expand event attendance.

✿LOGISTICS

Volunteers needed to manage equipment rentals, on-site set-up and layout of the event, waste management, registration, ticket collection and more.

Discounted Summer Gala tickets are available to volunteers who commit to donate a minimum of eight hours of time. Free admission to the Gala is reserved for volunteers working the event. Contact Kathleen Ackley to learn more and get involved: kathleen@capitollandtrust.org. ☘

CLOCKWISE FROM TOP LEFT: Sue Duffy, Hilary Hinkle, Jane Moore; Sandia Slaby; Oscar Terrell; Tom Terry; Mac Mckay, Bill Liechty, Sandra Shoultz, Paula Liechty, Jack Sisco, Jim French; Ken Guza; Jeny Lai, Jen Thurman-Williams, Ruth Abad, Amy Hatch-Winecka, Stephanie Bishop; Pacific mink; Yvonne Mayfield. ☘

Upcoming Events

Earth Day at Oakland Bay Historical Park

Join us in celebrating Earth Day at the new Oakland Bay Historical Park! This family-friendly event features local resource agencies, community groups and citizens coming together to enjoy and learn more about the wondrous natural resources found in Mason County. We will also be celebrating the grand opening of the park. There will be food and drink from local vendors as well as free demonstrations and field trips. The park will be open from dawn to dusk on Saturdays and Sundays after April 21st.



Terry Liberty

WHAT: Earth Day on Oakland Bay celebrating the grand opening of Oakland Bay Historical Park

WHEN: Sunday April 21, 2013, 11:00 AM to 3:00 PM

WHERE: Oakland Bay Historical Park, 1570 E Agate Bay Road, Shelton

For more information on Oakland Bay and for a schedule of the day's events, please visit: www.co.mason.wa.us/oakland_bay. This event is cosponsored by WSU Extension Mason County, Capitol Land Trust and the Mason County Parks and Trails Department. ☼

Capitol Land Trust Annual Meeting

Enjoy appetizers and drinks while exploring the beautiful 28,000 square foot Hands On Children's Museum and its 150 whimsical exhibits! We'll have the museum to ourselves for the evening. We'll be taking you on a visual tour of Capitol Land Trust's 2012 successes, and sharing our current stewardship activities and conservation projects. You'll also elect candidates to the Board of Directors. This is your chance to meet with staff and board, provide valuable input, ask questions and share your thoughts. We hope to see you there! ☼

WHAT: Capitol Land Trust Annual Meeting

WHEN: Tuesday April 23, 2013, 6:30 to 8:30 PM

WHERE: Hands On Children's Museum, 414 Jefferson St. NE, Olympia

RSVP: quita@capitollandtrust.org, (360) 943-3012

Exploring the Unique Flora & Fauna of Bogs

Spend an enjoyable morning with Capitol Land Trust at the Springer Lake Preserve in south Thurston County. Springer Lake is home to a rare quaking or swinging bog. We'll show you some of the unusual plants and animals that call the bog home, such as the carnivorous sundew (*Drosera*) and the rare metallic-colored Beller's ground beetle (*Agonum belleri*). We'll have a bird expert on hand to help identify birds we see along the way. This trip will be limited to the first 12 people who register. ☼

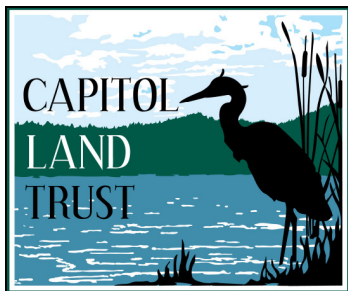
WHAT: Exploring the Unique Flora & Fauna of Bogs

WHEN: Saturday June 22, 2013, 9:00 AM to Noon

WHERE: Springer Lake Preserve, Olympia

RSVP: guym@capitollandtrust.org, (360) 943-3012

Julia Livesey



209 Fourth Ave. E, #205
Olympia, WA 98501

Address Service Requested

Nonprofit Organization
U.S. Postage
PAID
Permit #371
Olympia, WA

Save the Date!



Greg Memegar

Capitol Land Trust's Annual Summer Gala

Saturday August 10, 2013
4:00 to 8:00 PM
at Helsing Junction Farm

Don't miss this annual celebration featuring local food,
drink, live music, farm tours, an auction and more!

This year's special guest is four-time Emmy Award-winning writer for "Bill Nye the Science Guy," Lynn Brunelle. An editor, illustrator, and award-winning author of over 45 titles, Lynn has created, developed and written projects for Chronicle, Workman, National Geographic, Scholastic, Random House, Penguin, A&E, The Discovery Channel, Disney, ABC TV, NPR, The Annenberg Foundation, World Almanac, Cranium and PBS.

Lynn's educational projects range from Cranium board games and the popular Brainquest series to Pop Bottle Science and "Travels to the Edge with Art Wolfe," a PBS television series. A regular contributor to Martha Stewart Radio and NPR's Science Friday, she is the creator of Table-top Science - videos that make science fun and accessible.

Tickets to this 21-and-over only event will be on sale in early July. ☼



With
Special
Guest
**Lynn
Brunelle**

Keith Brofsky